

- Edge Glass
& V&A
Waterfront

CONTENTS

Report:
June Outing 1

July 31st:
TIME OUT 2
is 14

August 28th:
Time to visit 3
Paarl

More
Photos of 4
our June
Outing



TIME OUT
Ladies Club

PO Box 50371, West Beach, 7449

Phone: 021 557 0794 / Fax 0866 855562

email: toclub@iafrica.com

Cell Phone No.: 084 580 1469

BANKING DETAILS ON REQUEST

Website: <http://www.traveltime.co.za>

NEWSLETTER

JULY 2014

EDGE GLASS & THE V&A WATERFRONT

A somewhat diminished group went to Edge Glass and the V&A Waterfront on 26th June. The comments on the coach were: "interesting" / "Wow." Carol, we never get to see the city from this angle" & "I never drive myself to the Waterfront".

Our first stop was **EDGE GLASS** where Tom shared with us his love of what he does. He and Barbara also showed us the intricate glass beads they make!

Abraham who is working on a project for the Springfield Convent in Wynberg shared his project with us. What a tremendous insight! We can't wait to visit the new chapel and view his work after it is installed in August.

After this, a short walk around the **MARKET ON THE WHARF**, collecting as we went; and then lunch at the **Hildebrand Restaurant**. It was cold and rainy outside but oh so warm inside! Due to the short distance we had to travel we were home long before peak traffic started. Also a blessing in disguise!

Hilda always seems to find bicycles on the outings! (or her scouts find them!)



Thursday
31st July

Coach leaves
Constantia at
0845 &

Tableview @
09h30

Book by
Friday 4th
& payments
by Friday
18th July

Cost for the
day, which
includes
your
transport
and lunch
is R375
per person

Thursday
31st July

JULY: TimeOut is 14

It is time to celebrate the birthdays of Time Out and Traveltime, when Time Out turns 14 and Traveltime 7. Where, oh where have the years gone. As always the venue is a surprise, but you are promised a day of **FUN/GIFTS/and GOOD FOOD** at a brand new & exciting venue.

I have managed to obtain some gifts from my usual contacts, but it would be great to have a few more - are you able to help? If you are able to obtain / donate a gift, please let me know as soon as possible.



I leave for the Grahamstown Arts Festival on Saturday 5th July. If you are unable to get your promised gift to me by the 2nd July, I will arrange collection after the 14th July.

**CAN YOU GUESS
WHERE WE ARE GOING ?**

(Carol is seen at left with the Maitre'D at our lunch venue).

Guess where this is and win
a FREE day on 31/7.



**Book for you and your partner
(or friend) and deduct R100 from
the total (R50 each)**

PHONE on Monday 30th June after 08h30 with your answer. All correct answers will be noted and one winner will be drawn on 1st July.

Thursday
28th August

PAARL & THE RED TABLE RESTAURANT @ NEDERBURG

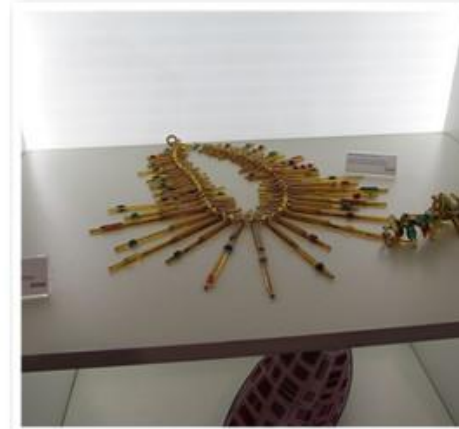


I have read of **Jacky Goliath** who together with **Elton Jefthas** started their own nursery in their back garden. Until she was 16, Jacky lived in a dusty platteland dorpie near Malmesbury, where there was no running water and no electricity. Her dad like many Cape folk, loved to grow flowers and fruit and vegetables, and Jacky inherited his love of being outdoors! She enrolled at the Peninsula Technicon and asked about landscaping – they only had a course on Horticulture which Jacky had never heard anything about. Today she is not sorry – she has never looked back since doing this course. Her first job was with the Agri Research Council where

she met Dr Cobus Coetzee who realized immediately what a talented student she was! Years later when Jacky set up her very own business, she was in a good position as Dr Coetzee was by then the horticultural technologist with Woolworths and he smoothed the way for her plants to be sold in the company's stores. Today the company she started (**De Fynne Nursery in Simondium**) employs 15 permanent employees with another 10 casual labourers during peak periods.

After our visit to De Fynne Nursery we will head to **The Red Table Restaurant** on the **Nederburg Wine Estate**. I have recently read very good reviews on this particular restaurant. The weather will in any event still be cold and rainy and what better way to spend a lunch out than at a restaurant in a gracious Manor house – a national monument complete with a blazing fireplace to warm us!

The Red Table offers locally-sourced fresh, light bistro-style food in a comfortable, relaxed and as their advert states a - 'gesellige' atmosphere.



Memories of June 2014