



ISSUE NO. 3:

Tour update 1
 Our recent visit to Grahamstown 2
 Accommodation Grahamstown & En Route 2 3
 Programme & Tickets 2
 Official Website & Facebook 2
 Performance Costs 3
 General Info 3

Planning is almost complete



**NATIONAL ARTS FESTIVAL
 GRAHAMSTOWN
 5TH—12TH JULY 2014**

Planning for our visit to **Grahamstown for the 40th Anniversary** of The National Arts Festival is ongoing and we can confirm the following as at 1st April:

- We have 17 passengers booked and
- We have paid the deposits for our accommodation at the **Mountain View Manor Guesthouse** which is situated in a prime position overlooking Grahamstown, as well as at **Knysna Hollow** for our outbound first night and **Christiana Lodge** in Plettenberg Bay for our inbound last night on tour.
 See more details on pages 2 &3

This tour is definitely one which should be on your bucket list, **to be done again & again**, not only for the Theatre, Dance, Music (Contemporary / Jazz & Classical), Comedy, Drama, Cabaret, Art, Exhibitions, Cinema but also for the craft, people, food, restaurants and fantastic people you meet along the way. From the fringe Programme through to the Main Programme, you have an un-ending list of items to choose from.

If you do not enjoy yourself here, only you are to blame.

Don't travel alone, travel in a group to experience the full benefit of companionship & fun.



Part of our 2012 tour group during a performance of Big Boys Don't Dance at the Highlander

We will be issuing regular updates and the following 'planning checklist' will confirm our progress:

1. Accommodation	✓	2. Tour Costing	✓	5. Decide on Performances	3rd May	7. Tour Itinerary	
3. Information Brochures	✓	4. Official Programme	Release Month: April	6. Buy Tickets & prepare individual show schedules	5th May	8. We're on our way!	

Official Programme released on line 27th April. Awaiting printed version

Tour Information Brochure



Exclusive Tours



Special Points Of Interest

4 Star Rated
Spectacular Views
over Grahamstown
Situated 5 Minutes
From Town Center
Vintage Chic Décor
En Suite Bathrooms
All Rooms Have
DSTV With Flat
Screen TV
On Site Laundry
Swimming Pool
Liquor License
Website & Facebook



TRAVELTIME TOURS

Offers

FRIENDSHIP;
FUN;
GOOD COMPANY
&
EXCITING TIMES

RECENT SITE INSPECTION

On Sunday 23rd March Carol & I visited Grahamstown for a meeting with the Festival Manager as well as the owners of Mountain View Manor Guest House, our home for the duration of our stay.

Our prime concern was gaining access to our accommodation. Hylton Ross had recently upgraded our vehicle to a 44-seater coach and we were concerned that the entrance was too steep.

We are happy to report that our concerns proved to be unfounded and we were also able to confirm the following:

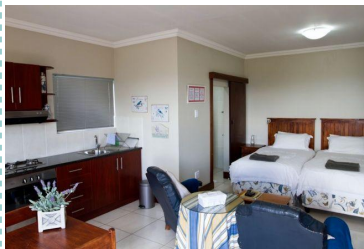
- Mountain View Manor is not dependent on the Municipal water supply. They have large water storage tanks on site.
- They also have a large generator on site to cater for any power outages.
- We were able to meet the on site Chef and briefly discussed his menu plans for our stay. He confirmed that an evening braai could be included.

OUR ACCOMMODATION IN GRAHAMSTOWN

Mountain View Manor is entering it's 3rd Festival year and it is 2 years since we last visited. A pool has been added and the gardens are flourishing. See the photos of the guesthouse hereunder



ON SITE APARTMENTS (CROWS NEST & FALCONS REST)



PROGRAMME & TICKETS

Our visit to the National Arts Festival Office in March was well worth it as we got to meet the Festival Manager as well as the Social Media Manager, who confirmed that there are a number of surprises to be found in **the Festival Programme. (On line version released on 27th April).**

The Programme has been published on their website and hard copies will be sent to us by courier for distribution to those booked on our tour. Regrettably I believe we will only receive these copies after booking opens and we will lose the benefit of the early booking facility. **Ticket sales for Art Bucks subscribers (we belong) will open on 2nd May, 1 week before the general bookings open on 9th May.**

*Our 'performance choice' meeting will go ahead and we will make use of a data projector to view and discuss the Programme. This is important, as it will give everyone an insight into what the popular shows are and what everyone else is choosing. **The meeting will take place on Saturday morning 3rd May at 10am at Kelvin Grove in Newlands.***

OFFICIAL WEBSITE & FACEBOOK

- It is in your interest to visit the Official Festival website to get updated information as it is released. <http://www.nationalartsfestival.co.za/>
- If you have a Facebook page we suggest that you *connect to National Arts Festival Grahamstown* and *like their page*. This will immediately let you see all their posts on your news feed.
- At the same time *connect to Traveltime Tours (and Time Out)* and like our pages (if you haven't done this already). We regularly publish tour updates and photos as well.
- **Our new website is now live, so please have a look at it and provide your comments / criticisms. www.traveltime.co.za**



Special Points Of Interest

Overnight in Knysna
& Plettenberg Bay

Accommodation
Reserved

Festival Programme
issued in April

Performance
Tickets must be
pre-booked

Performance Costs
General Information



TRAVELTIME

TOURS

Offers

FRIENDSHIP;

FUN;

GOOD COMPANY

&

EXCITING TIMES



ACCOMMODATION EN ROUTE

As in 2012 we have planned to travel by road to Grahamstown, with an overnight stop in Knysna (out-bound) at **Knysna Hollow Country Estate** (<http://www.seasonsinafrica.com/hotels-in-south-africa/knysna-hotels/knysna-hollow-country-estate/>) which is part of Seasons in Africa Group. On the inbound leg we will overnight in Plettenberg Bay at **Christiana Lodge** (<http://www.christianalodge.com/>). Both bookings are confirmed and dinner will be in house on both evenings.

KNYSNA HOLLOW



CHRISTIANA LODGE



Performance costs (*Festival Programme issued in April*)

We have not included the performances in the overall price as this is an unknown. We will need to discuss this with all participants (once the programme is issued) to ensure that all preferences are met before doing a block booking. [Based on our 2012 bookings, R600 per person will pay for 10 performances over 5 days.](#) It is important to pre-book as many shows were sold out when we visited in July 2011 / 2012

General Information:

- We have downloaded the online Official Programme which was released on 27th April. Carol selected about 60 performances from the Main & Fringe programmes, and has chosen 14 must see items from this list. **This will undoubtedly give us a good start in our deliberations on Saturday 3rd May.** Bookings officially open on 9th May and since we are 'Art Bucks Members' we get preferential booking from 2nd May! So, we need to decide what we want to see!
- As the Festival Office provides information, we will provide regular updates in this format, leading up to the official opening of the Festival.
- Please contact us for any information you require relative to the Festival activities, restaurants, markets etc.
- Mountain View Manor has provided a list of dinner items we can expect during our stay. We will need to decide how many dinners we will be having in house and select what we would like to have on each day. The choice is ours.
- Please advise of any dietary requirements as soon as possible (if we do not already have this on record).

Things are hotting up now. Before long we will be on the road again !